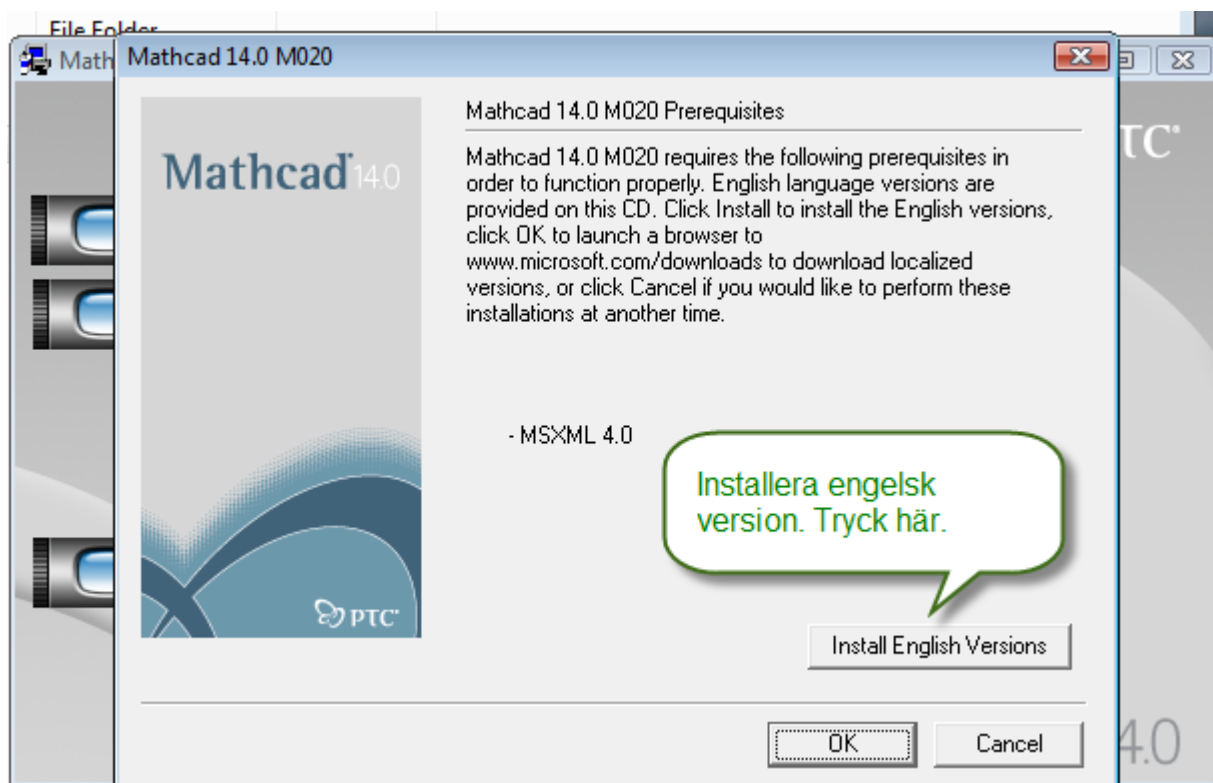


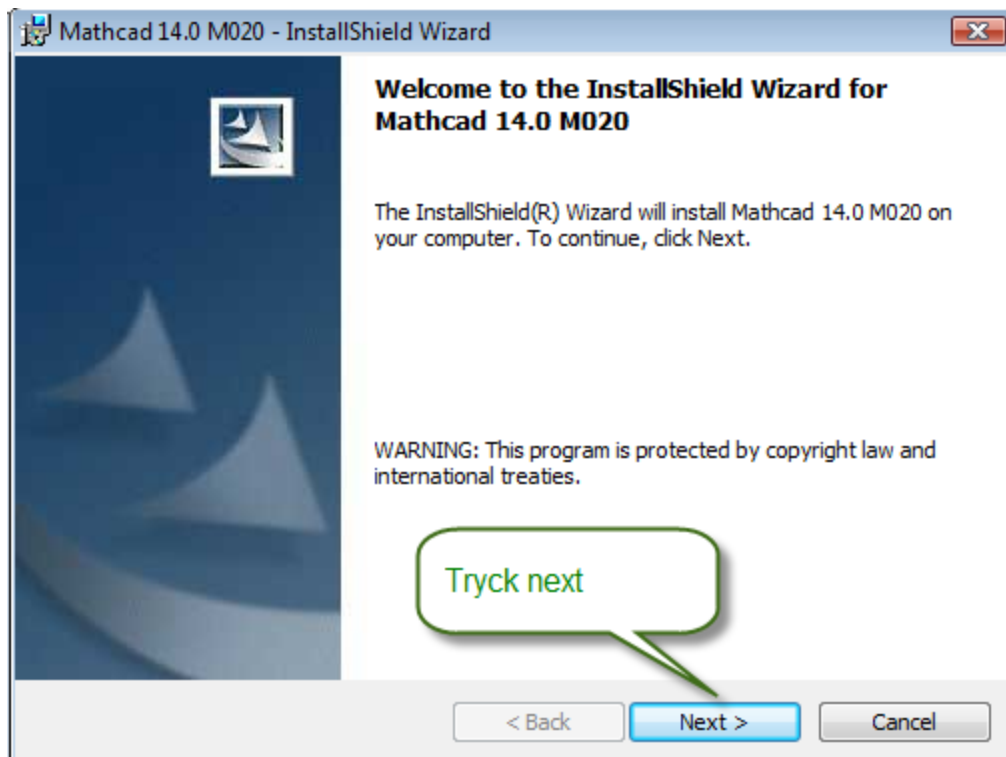


För installation av mathcad så krävs det följande två delar till hands:
Installationsfiler i form av en CD-skiva eller filer nedladdade från PTC:s hemsida
Licensfil eller Licens-server, för hjälp och instruktioner om hör av er till supporten.
Eller se guiden för att hämta ut licenser.

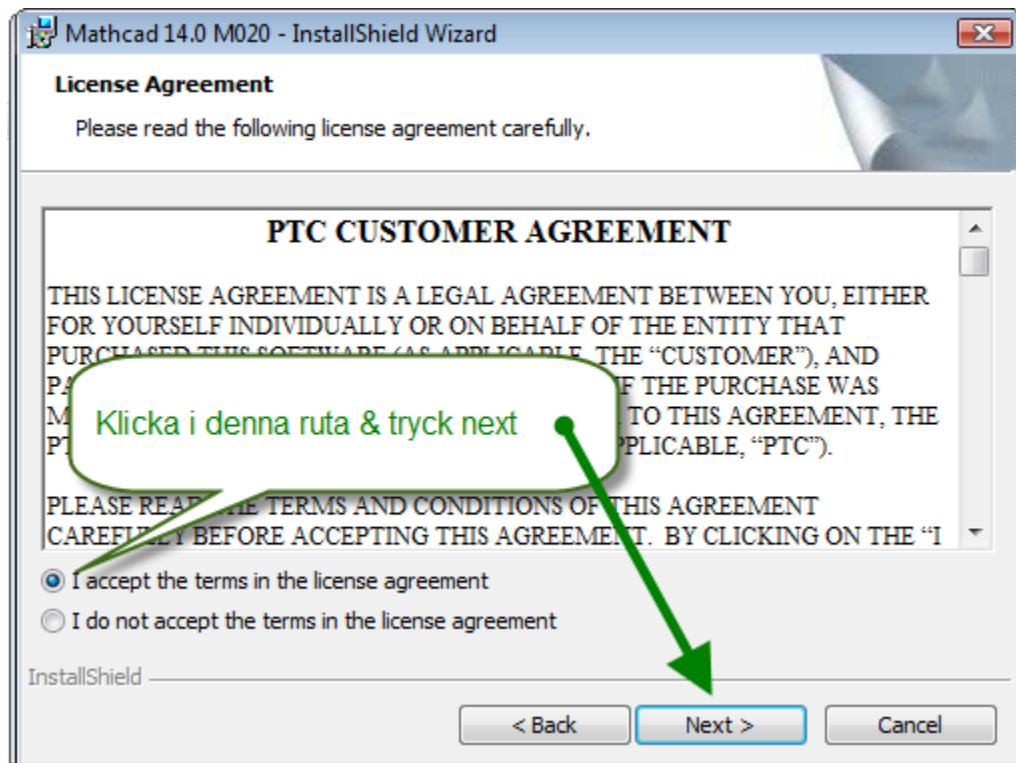
Name	Date modified	Type	Size
Acrobat	2009-10-15 12:18	File Folder	
Flex10	2009-10-15 12:18	File Folder	
IE7	2009-10-15 12:17	File Folder	
Mathcad	2009-10-15 12:17	File Folder	
PreReq	2009-10-15 12:17	File Folder	
Administration_Guide	2007-04-24 13:15	PDF File	510 KB
AUTORUN	2004-04-07 13:05	Setup Information	1 KB
setup	2008-01-08 11:51	Application	1 700 KB

Öppna Mathcad foldern, klicka på setup

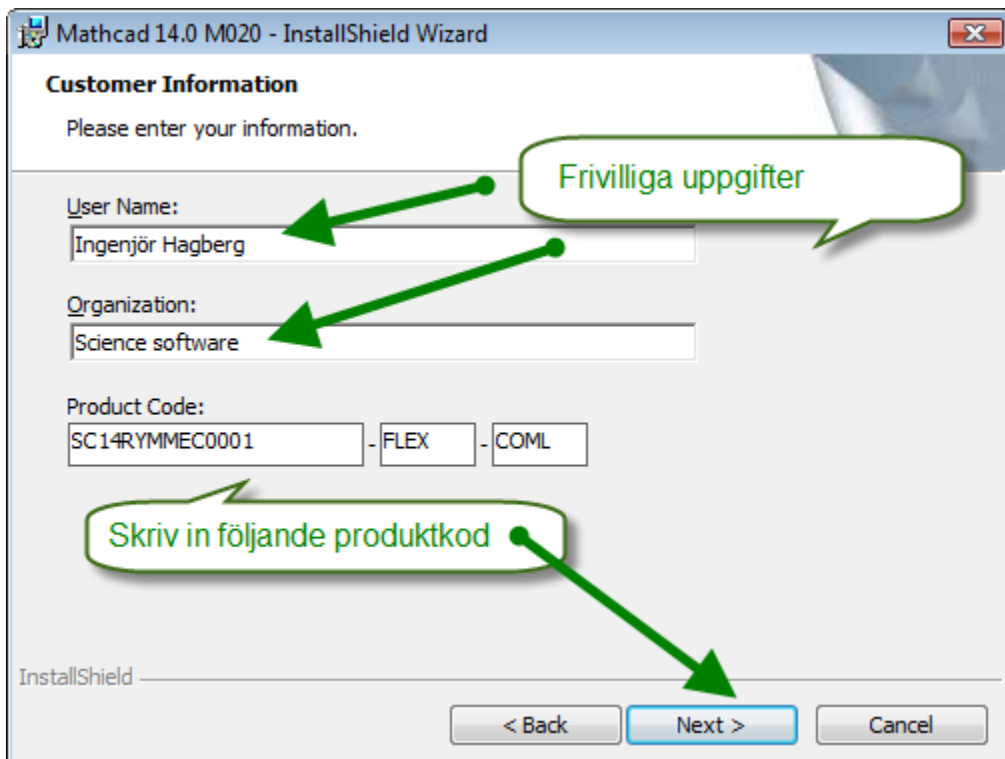
1**2**



3



4

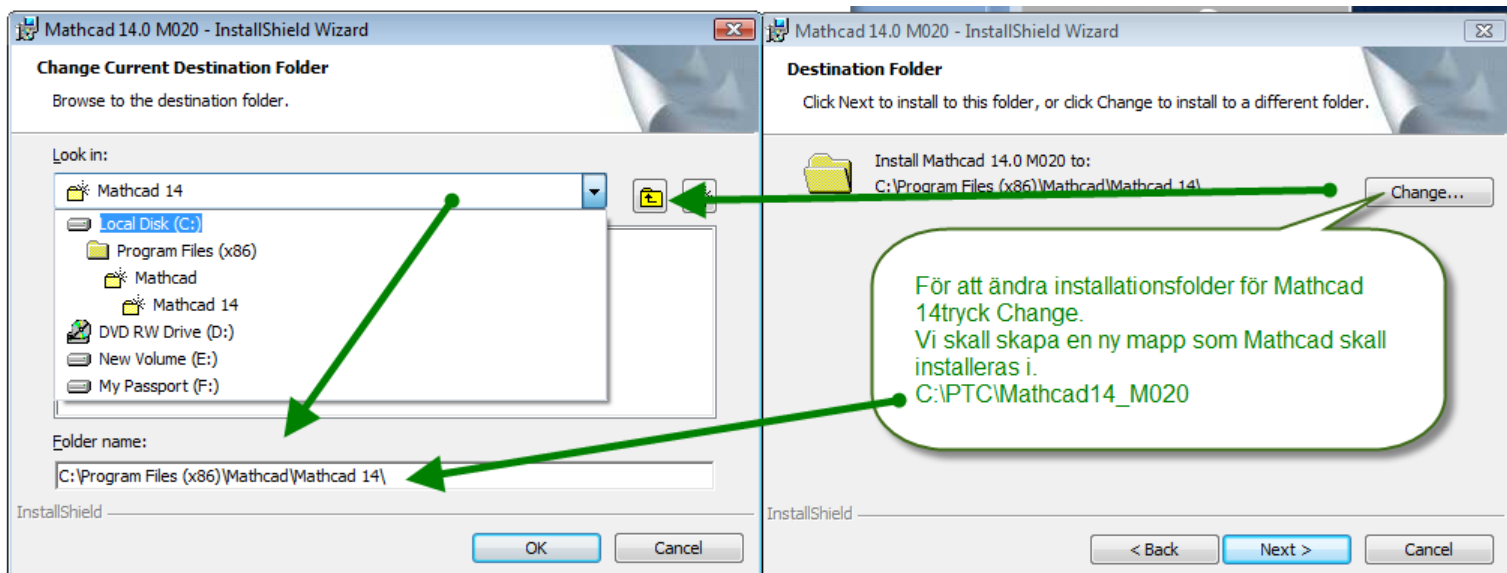


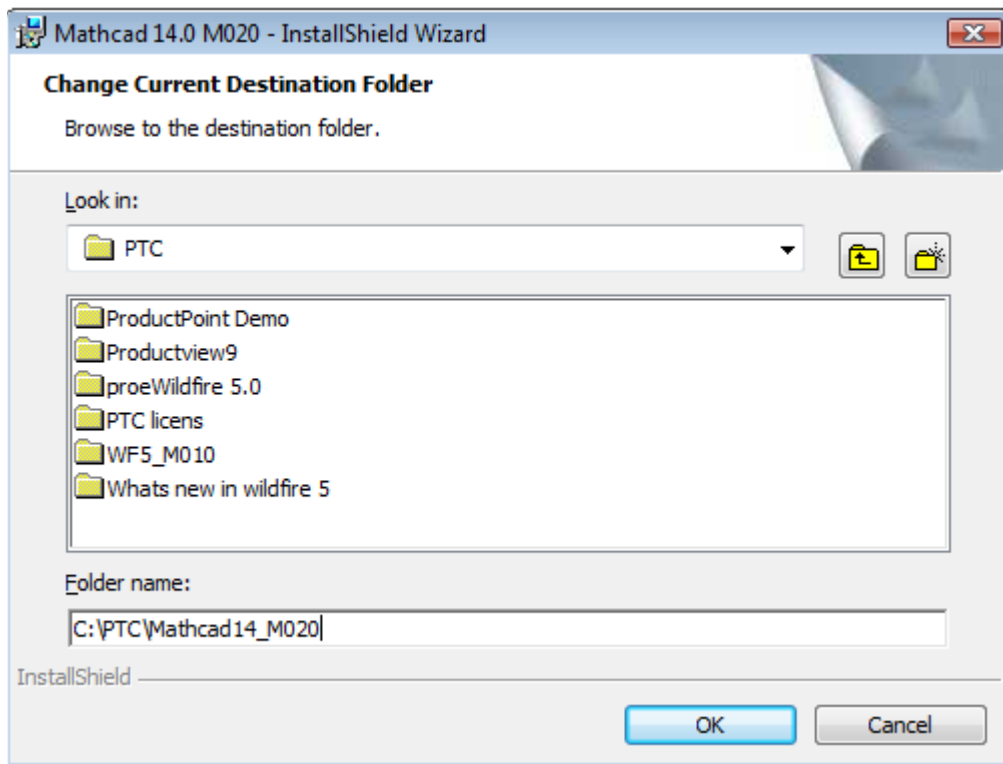
5

Product Code: SC14RYMMEC0001-FLEX-COML

6

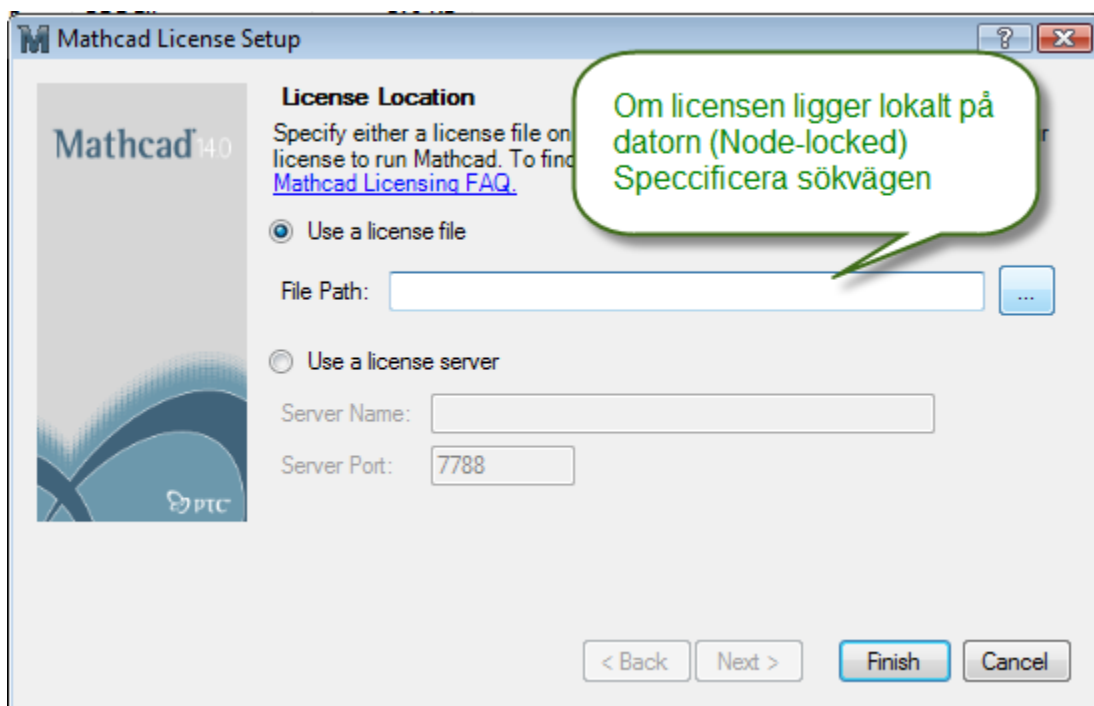
File path: C:\PTC\Mathcad14_M020





7

8





Instruktion för att se namnet på licenseservern

```
Administrator: C:\Windows\system32\cmd.exe - ptcstatus
Microsoft Windows [Version 6.0.6002]
Copyright (c) 2006 Microsoft Corporation. All rights reserved.

C:\Users\Pinko>ptcstatus

Displaying status for license file: 7788@supporten
License Server is UP: supporten 00-22-19-D1-38-73
ptc_d FLEXnet Publisher version: 10.8
-----
Licen
-----
Pro/NOTEBOOK*          0      1
Pro/CAE*                0      1
Pro/PROCESS_MFG*       0      1
Pro/Web.Link*          0      1
Pro/NC-SHEETMETAL*    0      1
Pro/MOLDDDESIGN-2*    0      1
Behavioral_Modeler*   0      1
Expert_Machinist*     0      1
Pro/PlasticAdvisor*   0      1
Pro/TOOLKIT*           0      1
ADVANCED_RENDER*     0      1
Chinese_Translation*  0      1
Pro/INTF-for-CAT-II-w/ATB* 0      1
Interactive_Surface_Design* 0      1
Pro/ISOGEN*           0      1
Mechanism_Dynamics*  0      1
Expert_Moldbase*     0      1
-- More --
```

